

Ethnicraft

ACCESSORIES



COLLECTION 2020

*We create the foundations of your home,
to inspire the stories of your life.*

For the past 25 years, we have been creating timeless furniture and accessories manufactured from quality materials. True to our values, we have maintained our goal to produce good design, distinguished by authenticity, simplicity and quality, as well as creativity and innovation. We rely on our unique expertise to create singular designs ready to embellish your daily life durably. We create collections for every room of the house: from the furniture that defines the purpose of a space to the objects that layer it with meaning. Nothing excites us more than seeing how people love and use our products in the story of their lives.

All of our designs are intentionally timeless. They withstand trends and associate well with different styles, and they can be passed on from one home to the next, carrying over the stories of one lifetime into another.



10	LOOKBOOK
68	TRAYS
106	PERFECT COMBINATION
112	TRAY TABLES
118	SIDE TABLES
126	WALL DECOR
136	HOME TEXTILES
152	CARE INSTRUCTIONS



ICONS YOU MIGHT COME ACROSS IN OUR PRODUCT CATALOGUE

- O** OILED
The items marked with this icon are finished with a natural oil. Visit page 153 for more information on how to take care of our oiled furniture.
- V** VARNISHED
The items marked with this icon are finished with varnish. Visit page 153 for more information on how to take care of our varnished furniture.
- B** BRUSHED
The items marked with this icon are brushed. This finishing gives our furniture more depth. The rougher surface highlights the grain of the wood.
- C** CONTRACT GRADE
The items marked with this icon are EN and/or BIFMA certified.

100 % SOLID WOOD
The items marked with this icon are 100% made out of solid wood.

FSC® FOREST STEWARDSHIP COUNCIL
The items marked with this icon carry the FSC® 100% label. Visit page 157 for more information on the organization that promotes responsible management of the world's forests.

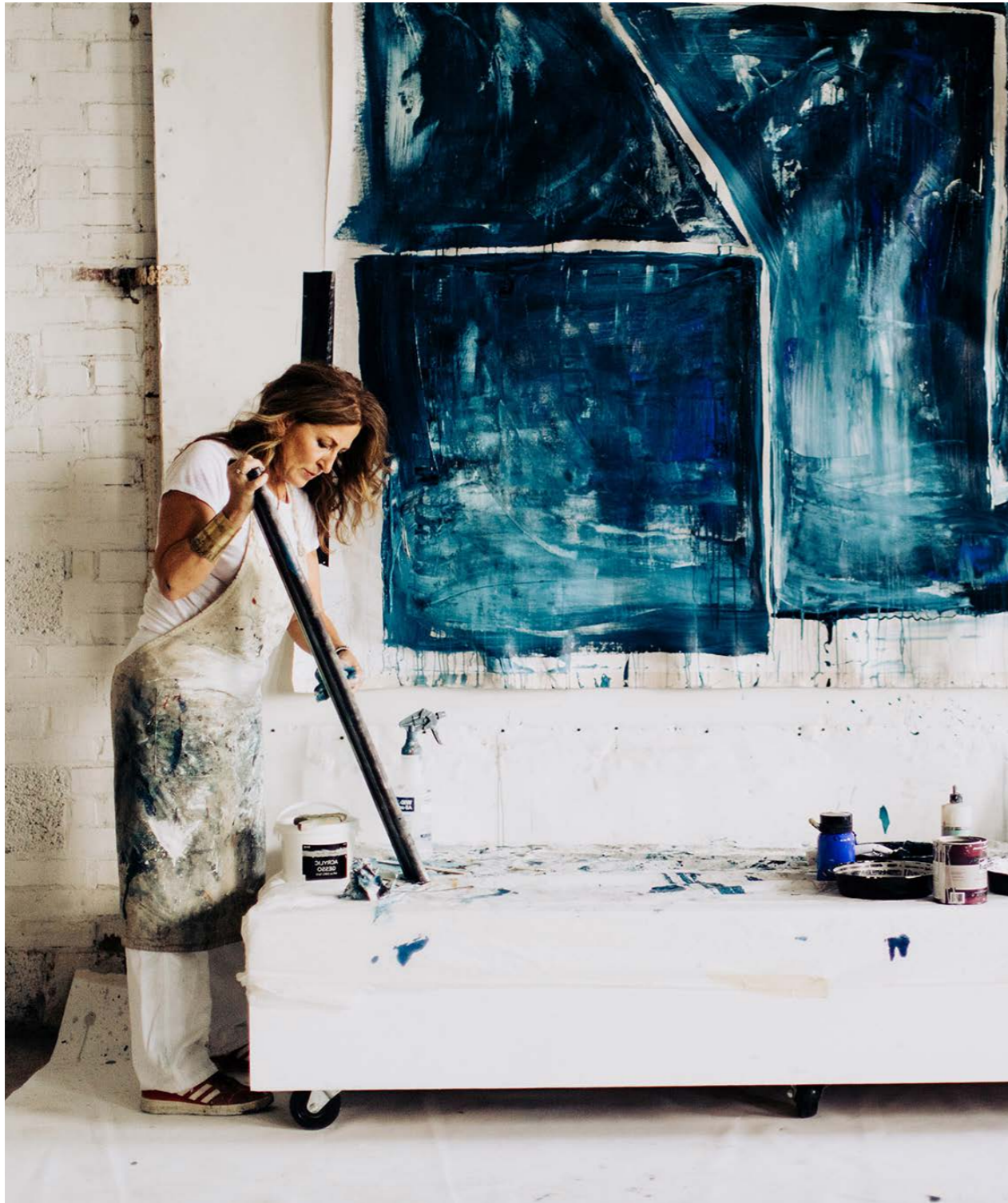


The mark of
responsible forestry



The mark of
responsible forestry

Please refer to our website for more information:
www.ethnicraft.com

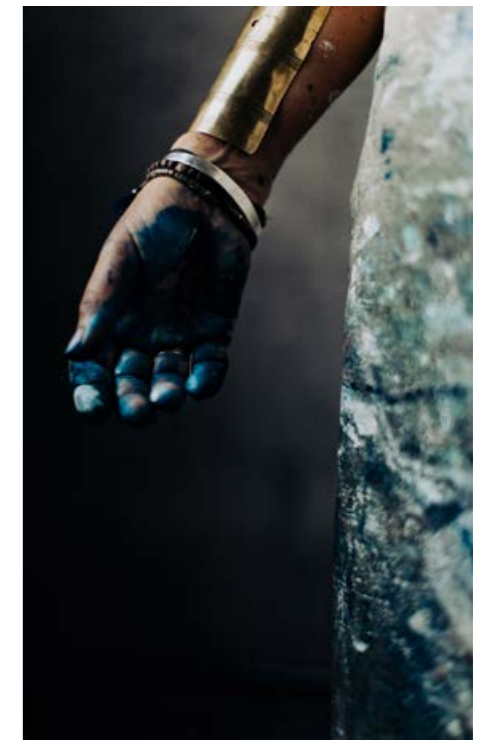


Designer

DAWN SWEITZER

The start of a new year is an exciting time filled with goals, dreams and new beginnings. In 2020, this is especially true for Ethnicraft. This year we are officially merging with longtime partner and lifestyle brand Notre Monde. Together, we will keep doing what we do best: creating timeless furniture and sophisticated accessories. United as one, under the Ethnicraft name.

Notre Monde's beloved designer Dawn Sweitzer will be the main artistic mind behind the accessories. From her childhood in Ohio's great outdoors, her curiosity for life and her many travels around the globe, Dawn has collected images and sensations, which she now channels into her work as an artist without limitations. Her multiple inspirations have given rise to extremely rich pictorial compositions, based on abstract, complex and modern patterns, arranged into combinations and successive layers interacting with materials, colors, textures and finishes. Today, the artist uses her spacious studio, located in High Point, North Carolina, as a playground where she is free to experiment different techniques and explore a variety of mirrors, tables and home textiles for the Ethnicraft collection.





TRAYS

Inspired by fresh ideas of global origin, we have created a sophisticated and subtle collection of trays. Luxury is melded with practicality, in the spirit of decorative objects. Global patterns, textures and layers are translated onto our pieces with traditional printing and hand-finishing techniques. The exceptional process contributes to the unique quality and authenticity of each tray. Whether you use them to serve drinks, or as exclusive pieces of art on the wall: the trays are sure to catch the eye.



URBAN GEOMETRY

WABI SABI





TRANSLUCENT SILHOUETTES



The mingling of lavish gold with cool indigo in rich patterns creates a fluid balance between the masculine and feminine, aptly capturing the sumptuous movement of fabric.

TRIBAL QUEST





CLASSICS

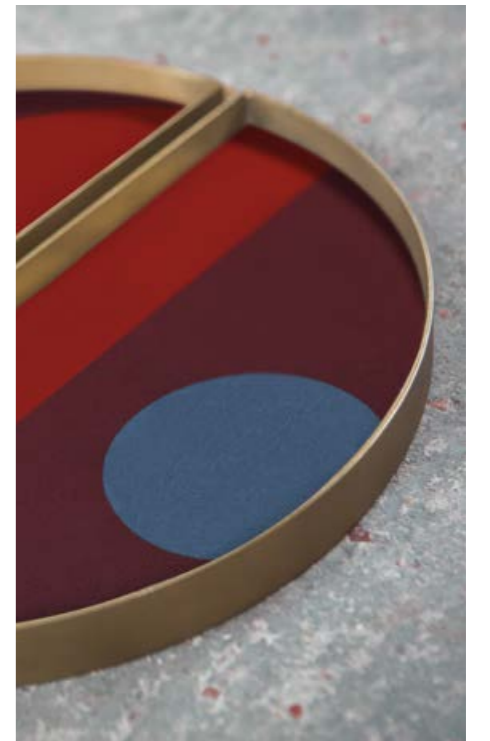


VALET TRAYS

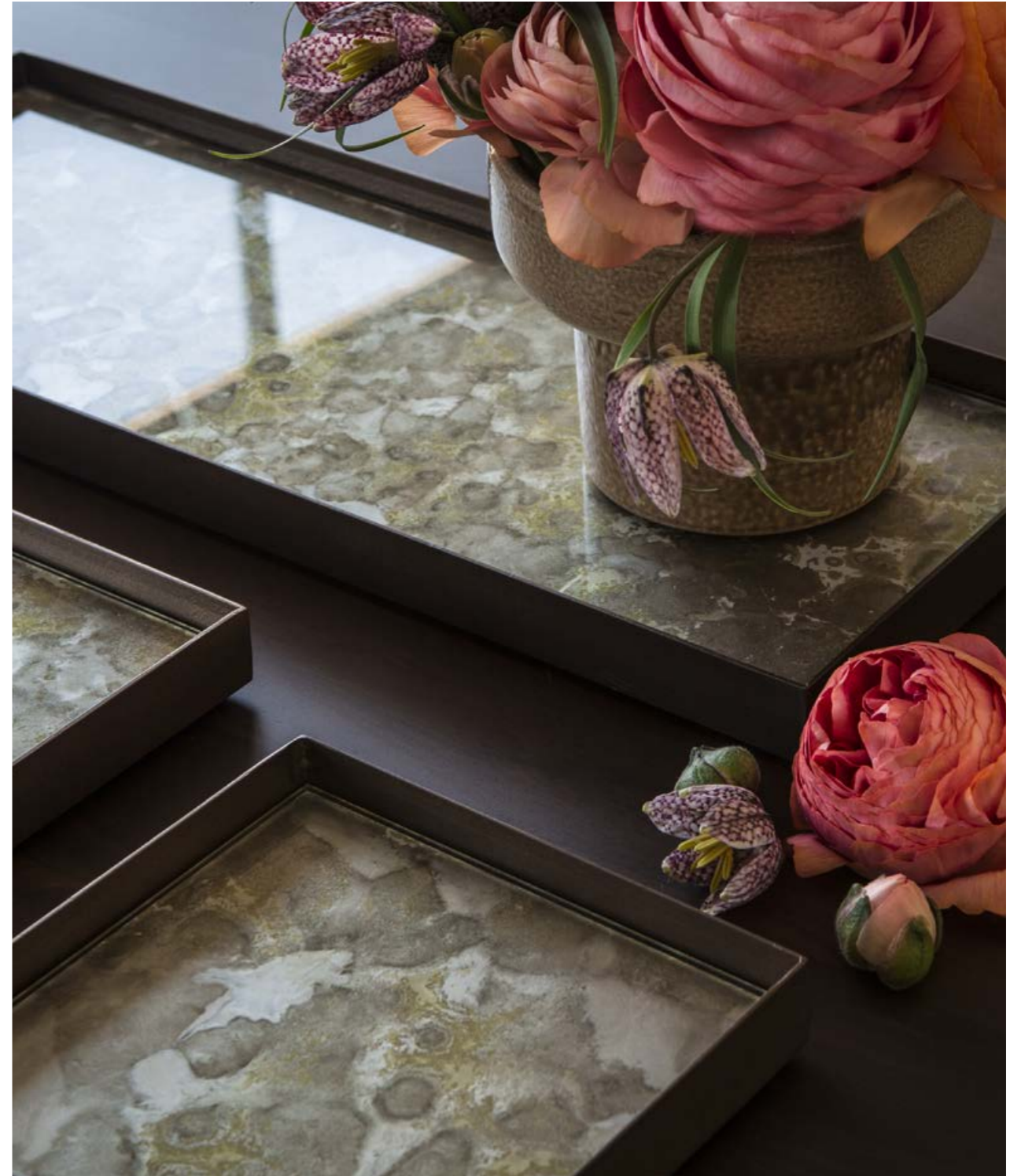
Despite its small size, the valet tray packs a lot of patterns and textures into its small frame. Its compact size allows for versatility, making it perfect for serving up a drink or a snack, as a key holder, jewelry tray, ...

These small trays can be a colorful accent anywhere in the house. From the hallway to the bathroom or your coffee table, there's always room to add a small, glamorous and colorful touch.





*Placed in the hallway, it is a key holder. In the bathroom,
it is a jewelry tray. On the coffee table, it is a decorative item.
Anywhere in the house, it is a stylish accent piece.*





TRAY TABLES

The tray table's ability to adopt different trays allows you to mix or match various colors and patterns, creating a personal piece that is uniquely yours. That way, you can easily change its look whenever you want. While it may serve its function as a table, the versatile piece also transforms into a moveable singular tray when removed from its structure. Beautiful and convenient.



THE PERFECT COMBINATION

Create a table that is uniquely yours by choosing one of our favorite tray combinations or by selecting your own matching pair of trays.





SIDE TABLES

Our side tables are like so many things in life: it's all in the detail. They are highly versatile and can also be used in the bedroom where they make wonderful nightstands.



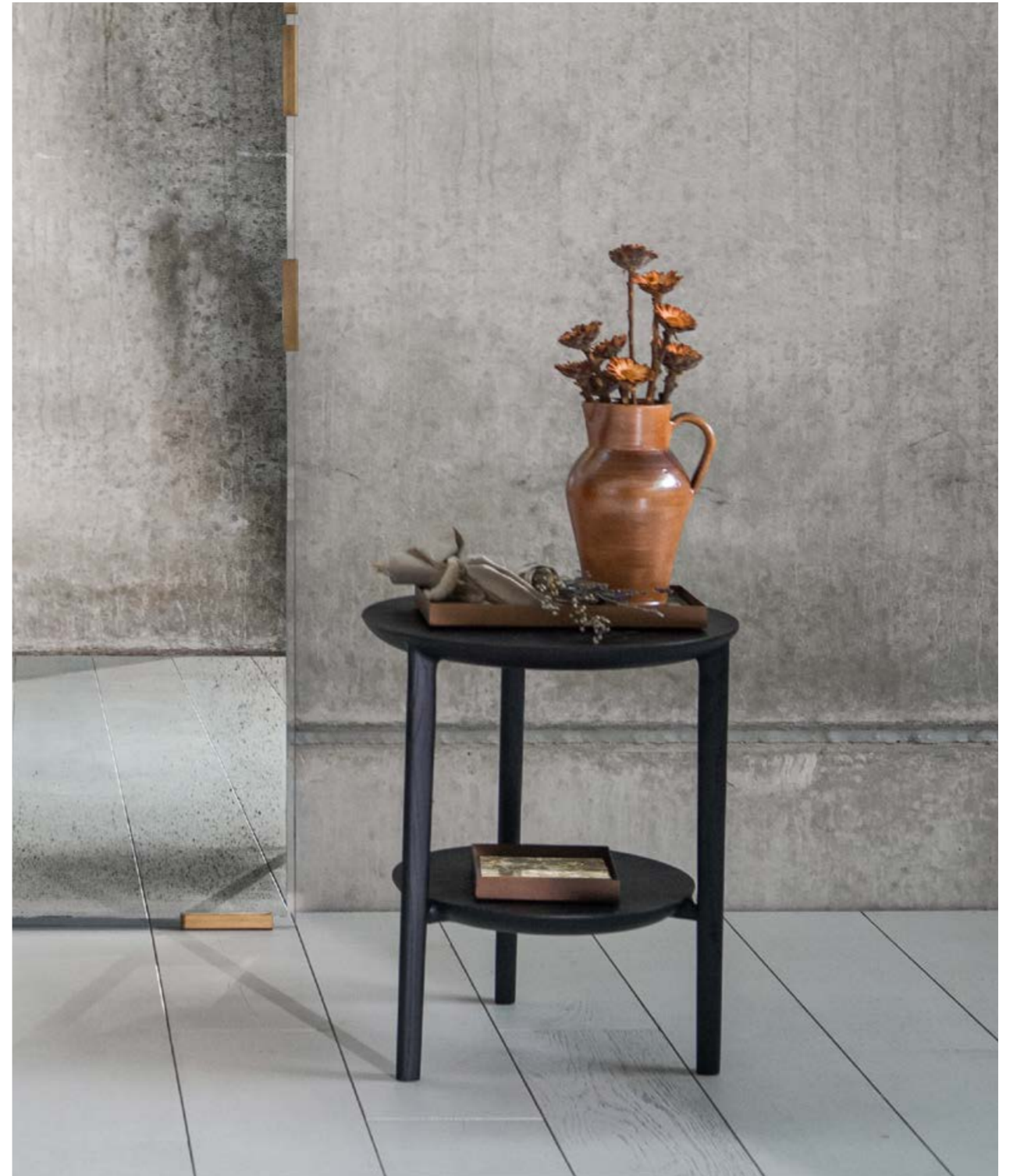
GEOMETRIC SIDE TABLE





NESTING SIDE TABLE

BOK SIDE TABLE





COVE SIDE TABLE



TRIPOD SIDE TABLE

“Your environment should be luxurious, filled with the true beauty of the people and things that inspire you”

- Dawn Sweitzer, designer.



COMPACT SIDE TABLE



WALL DECOR

From an elegant aged mirror that doubles as art to sleek wooden shelves: we provide the perfect finishing touches to tie any room together. Hang our pieces on their own or display a number of them in your space to make a bold statement.

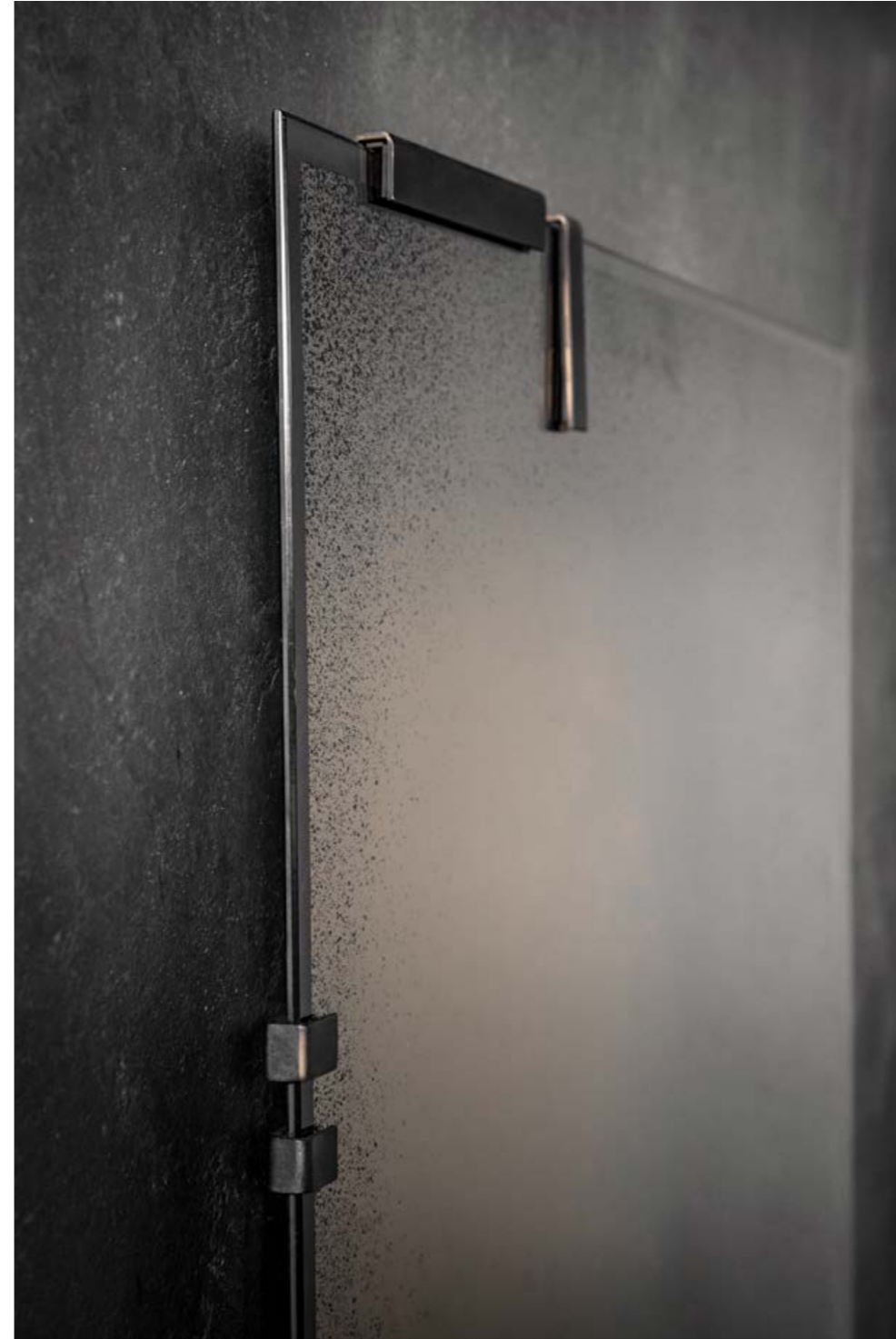


AGED MIRRORS





FRAMELESS MIRRORS





U SHELF



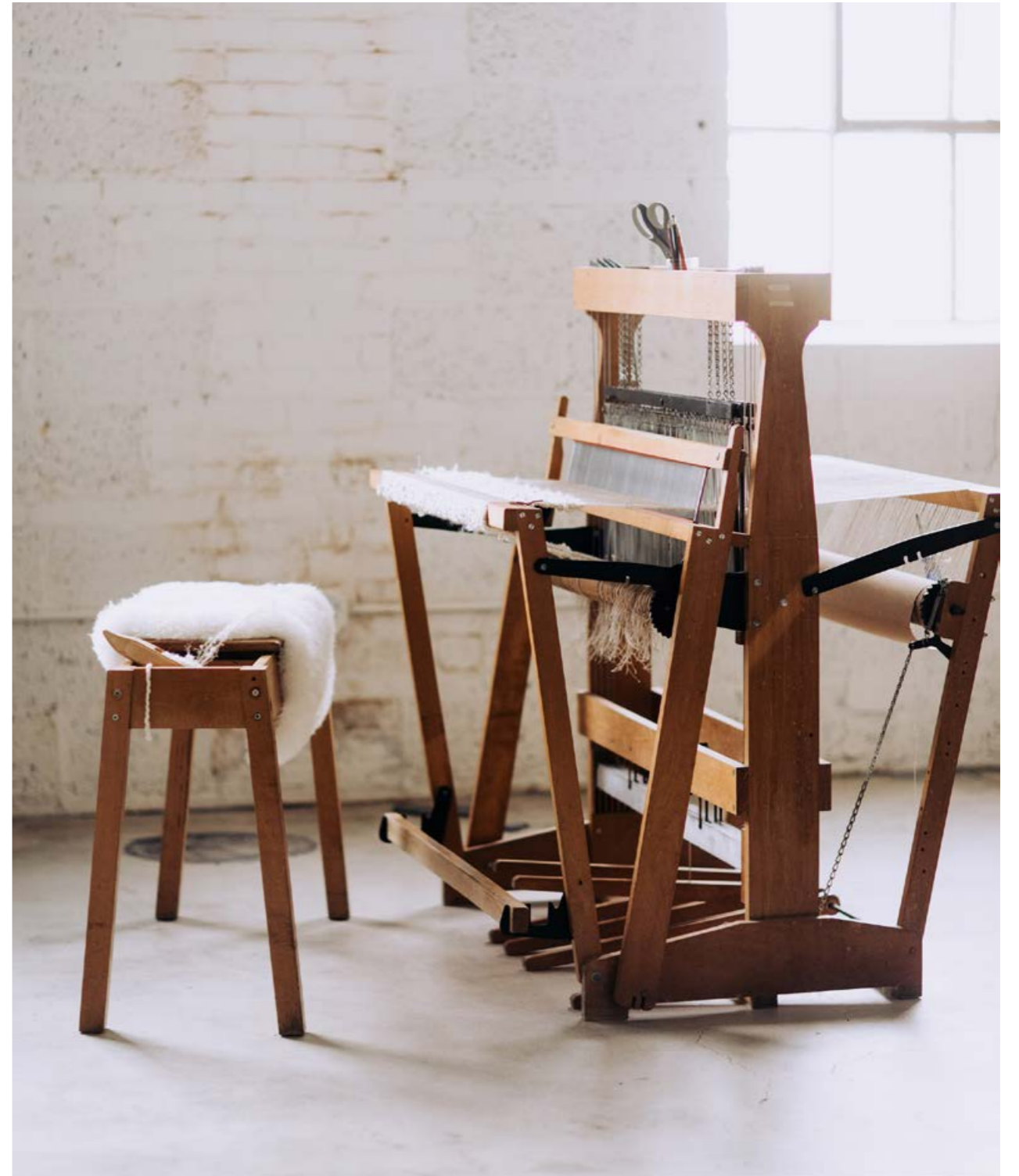
WALL SHELF



HOME TEXTILES

Manufactured in a Belgian family-owned weaving mill, this first collection named “Refined Layers” consists of cushions and throws featuring abstract patterns for an understated and original look. They are manufactured from Jacquard fabrics woven mainly from cotton, linen and wool, which blend together to create a play on textures and assorted shaded tones. Mix and match freely with this plush and cozy collection.

Our cushion covers and throws are crafted from the best weaving yarns which are primarily produced in Belgium, France, Italy and Peru. By consciously choosing natural fibers - such as cotton, wool and Belgian linen - we stay true to our values: design pieces full of character, made from quality materials that age beautifully.





REFINED LAYERS



“For this collection, I wanted to achieve a sense of balance between a modern, uncluttered style and my own bohemian and refined influences.”

- Dawn Sweitzer, designer.





PRODUCT OVERVIEW

For more detailed product information,
visit our website www.ethnicraft.com



URBAN GEOMETRY COLLECTION

GRAPHITE CHEVRON

DRIFTWOOD TRAY

SMALL

20932 48 × 48 × 4 CM
19" × 19" × 1,6"

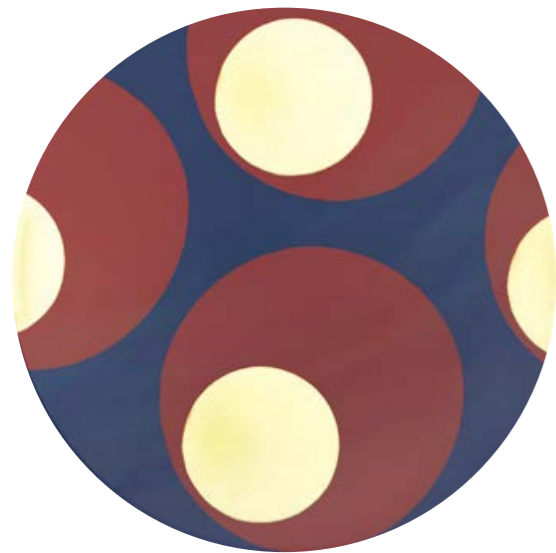
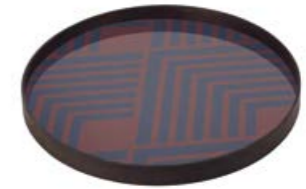


MIDNIGHT CHEVRON

GLASS TRAY

LARGE

20934 61 × 61 × 4 CM
24" × 24" × 1,6"



TURKISH DOTS

GLASS TRAY

SMALL

20933 48 × 48 × 4 CM
19" × 19" × 1,6"

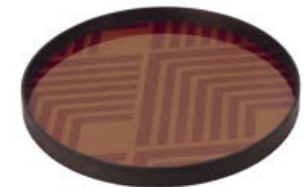


ORANGE CHEVRON

GLASS TRAY

LARGE

20935 61 × 61 × 4 CM
24" × 24" × 1,6"





FOLK
DRIFTWOOD TRAY

LARGE
20936 61 × 61 × 4 CM
24" × 24" × 1,6"



SLATE CURVES
DRIFTWOOD TRAY

LARGE
20940 61 × 46 × 5 CM
24" × 18" × 2"



ASYMMETRIC DOT
DRIFTWOOD TRAY

XL
20937 92 × 92 × 4 CM
36" × 36" × 1,6"



GEO STUDY
DRIFTWOOD TRAY

SMALL
20938 46 × 36 × 4 CM
18" × 14" × 1,6"



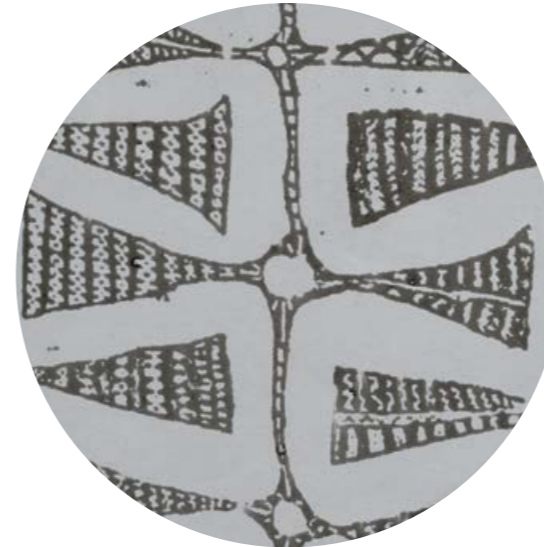


GRAPHITE CURVES

DRIFTWOOD TRAY

MEDIUM

20939 69 × 31 × 5 CM
27" × 12" × 2"



GRAPHITE BOHEMIAN

GLASS TRAY

SMALL

20458 48 × 48 × 4 CM
19" × 19" × 1,6"



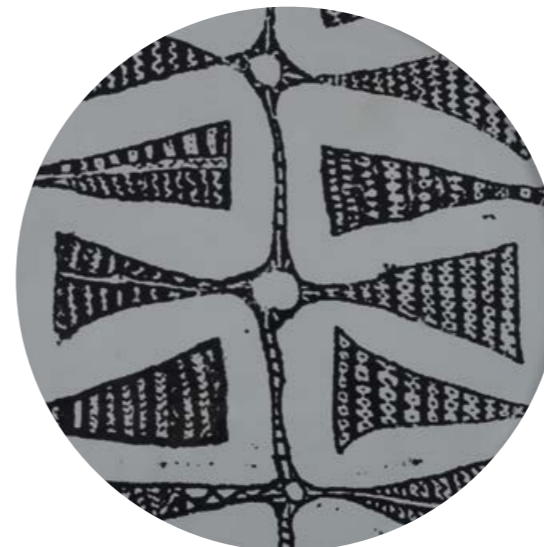
WABI SABI COLLECTION

SLATE WABI SABI

GLASS TRAY

MEDIUM

20465 69 × 31 × 5 CM
27" × 12" × 2"



DARK BOHEMIAN

GLASS TRAY

LARGE

20460 61 × 61 × 4 CM
24" × 24" × 1,6"





SAND WABI SABI

GLASS TRAY

SMALL

20459 48 × 48 × 4 CM
19" × 19" × 1,6"



GRAPHITE WABI SABI

GLASS TRAY

XL

20462 92 × 92 × 4 CM
36" × 36" × 1,6"



SLATE WABI SABI

GLASS TRAY

LARGE

20461 61 × 61 × 4 CM
24" × 24" × 1,6"



SAND WABI SABI

GLASS TRAY

SMALL

20463 46 × 36 × 4 CM
18" × 14" × 1,6"





GRAPHITE WABI SABI

GLASS TRAY

LARGE

20464 61 × 46 × 5 CM
24" × 18" × 2"



TRANSLUCENT SILHOUETTES COLLECTION

SIENNA DOTS

GLASS TRAY

MEDIUM

20442 69 × 31 × 5 CM
27" × 12" × 2"



SILVER DOTS

GLASS TRAY

SMALL

20441 46 × 36 × 4 CM
18" × 14" × 1,6"



SIENNA LAYERED DOTS

GLASS TRAY

LARGE

20443 61 × 46 × 5 CM
24" × 18" × 2"





CONNECTED DOTS

GLASS TRAY

SMALL

20438 48 × 48 × 4 CM
19" × 19" × 1,6"



PINOT LAYERED DOTS

GLASS TRAY

SMALL

20437 48 × 48 × 4 CM
19" × 19" × 1,6"



SLATE LAYERED DOTS

GLASS TRAY

LARGE

20440 61 × 61 × 4 CM
24" × 24" × 1,6"



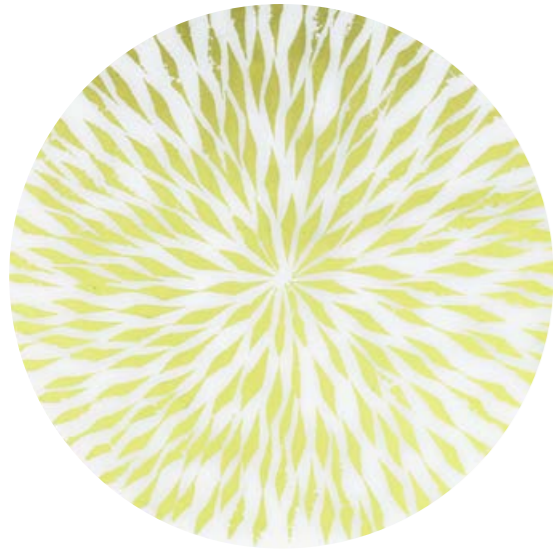
OVERLAPPING DOTS

GLASS TRAY

LARGE

20439 61 × 61 × 4 CM
24" × 24" × 1,6"

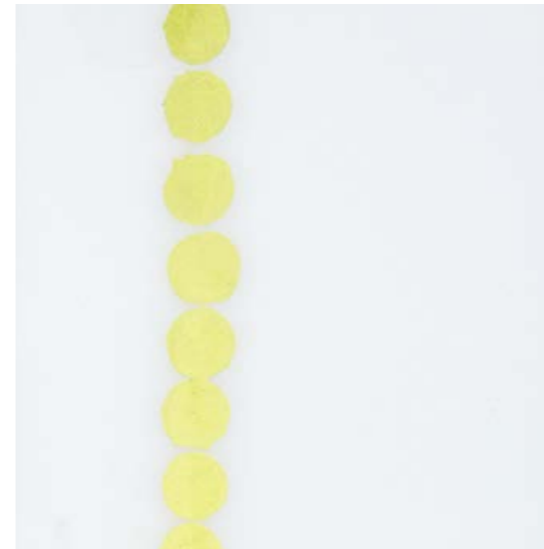




GILDED LAYERS COLLECTION

DAHLIA
GLASS TRAY

LARGE
20421 61 × 61 × 4 CM
24" × 24" × 1,6"



DOTTED LINE
GLASS TRAY

SMALL
20422 46 × 36 × 4 CM
18" × 14" × 1,6"



GOLD DOTS
GLASS TRAY

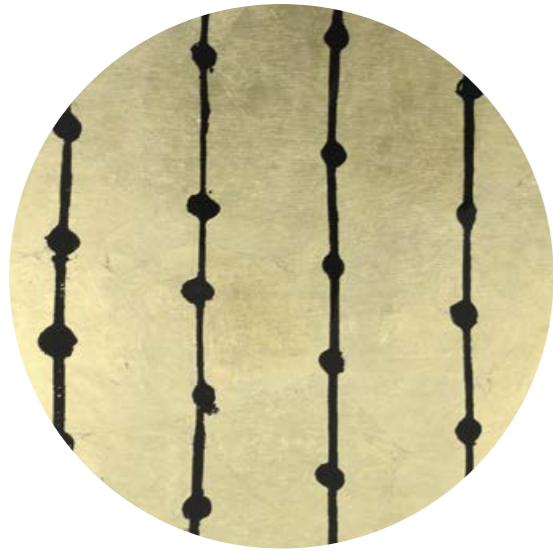
SMALL
20417 48 × 48 × 4 CM
19" × 19" × 1,6"



GOLD AND BLUE HALOS
GLASS TRAY

LARGE
20424 61 × 46 × 5 CM
24" × 18" × 2"





BROWN DOTS

GLASS TRAY

SMALL

20418 48 × 48 × 4 CM
19" × 19" × 1,6"



TURQUOISE ABSTRACT

GLASS TRAY

SMALL

20452 48 × 48 × 4 CM
19" × 19" × 1,6"



BRIGHT ABSTRACT COLLECTION

RASPBERRY ABSTRACT

GLASS TRAY

SMALL

20451 48 × 48 × 4 CM
19" × 19" × 1,6"



RASPBERRY LANDSCAPE

GLASS TRAY

LARGE

20453 61 × 61 × 4 CM
24" × 24" × 1,6"





CLASSICS COLLECTION

BRONZE SLICE

MIRROR TRAY

LARGE

20407 61 × 61 × 4 CM
24" × 24" × 1,6"



BLACK SLICE

DRIFTWOOD TRAY

XL

20379 92 × 92 × 4 CM
36" × 36" × 1,6"



WHITE SLICE

DRIFTWOOD TRAY

SMALL

20305 48 × 48 × 4 CM
19" × 19" × 1,6"



XL

20378 92 × 92 × 4 CM
36" × 36" × 1,6"



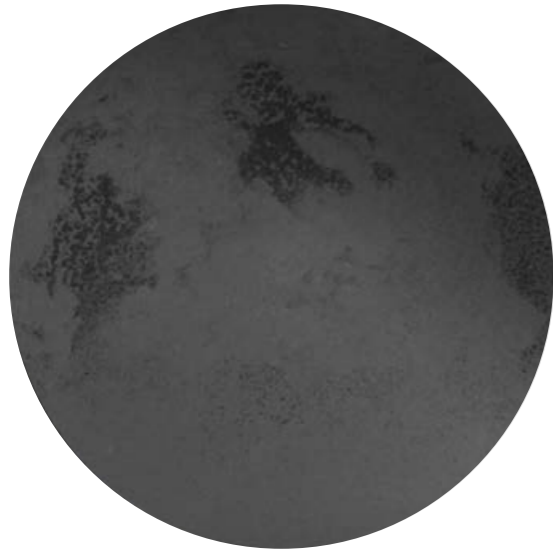
SLICE

LIGHT AGED MIRROR TRAY

SMALL

20402 48 × 48 × 4 CM
19" × 19" × 1,6"





CHARCOAL MIRROR

HEAVY AGED MIRROR TRAY

SMALL

20450 48 × 48 × 4 CM
19" × 19" × 1,6"



BRONZE MIRROR

HEAVY AGED MIRROR TRAY

SMALL

20403 48 × 48 × 4 CM
19" × 19" × 1,6"



XL

20331 92 × 92 × 4 CM
36" × 36" × 1,6"



SMALL

20316 46 × 36 × 4 CM
18" × 14" × 1,6"



MEDIUM

20356 69 × 31 × 5 CM
27" × 12" × 2"



LARGE

20317 61 × 46 × 5 CM
24" × 18" × 2"



CLEAR MIRROR

HEAVY AGED MIRROR TRAY

SMALL

20301 48 × 48 × 4 CM
19" × 19" × 1,6"



LARGE

20315 61 × 61 × 4 CM
24" × 24" × 1,6"





WHITE TREE
DRIFTWOOD TRAY

LARGE
20303 61 × 61 × 4 CM
24" × 24" × 1,6"



BLOSSOM
DRIFTWOOD TRAY

SMALL
20335 48 × 48 × 4 CM
19" × 19" × 1,6"



BLACK TREE
DRIFTWOOD TRAY

LARGE
20404 61 × 61 × 4 CM
24" × 24" × 1,6"



MIST GOLD ORGANIC
GLASS TRAY

SMALL
20361 48 × 48 × 4 CM
19" × 19" × 1,6"





BLACK MARRAKESH
DRIFTWOOD TRAY

LARGE
20436 61 × 61 × 4 CM
24" × 24" × 1,6"



MOROCCAN FROST
LIGHT AGED MIRROR TRAY

LARGE
20310 61 × 61 × 4 CM
24" × 24" × 1,6"



WHITE MARRAKESH
DRIFTWOOD TRAY

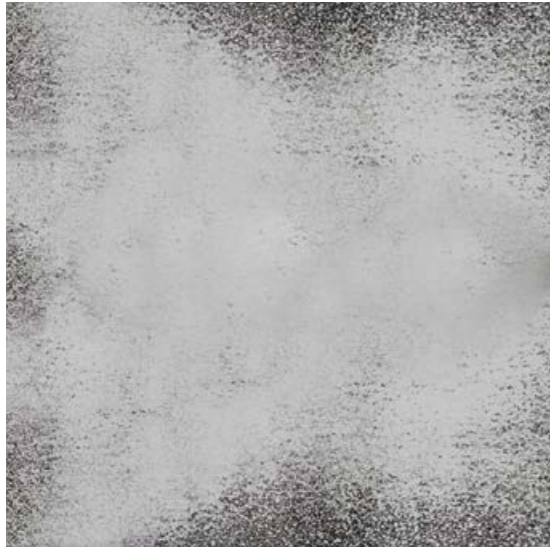
LARGE
20336 61 × 61 × 4 CM
24" × 24" × 1,6"



GATE
MEDIUM AGED MIRROR TRAY

MEDIUM
20430 69 × 31 × 5 CM
27" × 12" × 2"





FROST
HEAVY AGED MIRROR TRAY

MEDIUM
20366 69 × 31 × 5 CM
27" × 12" × 2"



INDIGO ORGANIC
GLASS TRAY

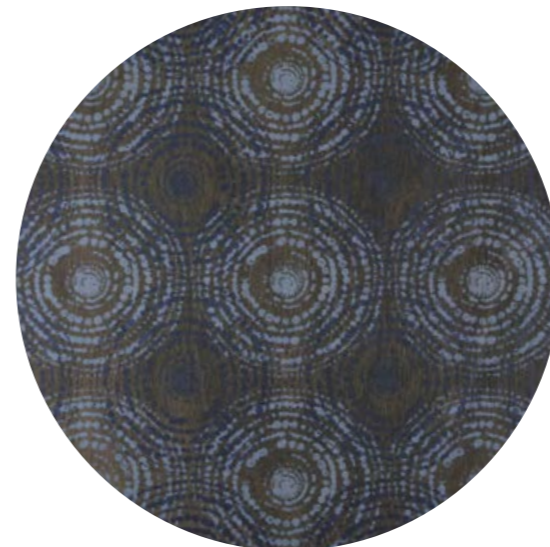
SMALL
20360 48 × 48 × 4 CM
19" × 19" × 1,6"



TRIBAL QUEST COLLECTION

BLUE MIST ORGANIC
GLASS TRAY

SMALL
20371 48 × 48 × 4 CM
19" × 19" × 1,6"



SEASIDE BEADS
DRIFTWOOD TRAY

LARGE
20374 61 × 61 × 4 CM
24" × 24" × 1,6"





BLACK BEADS

DRIFTWOOD TRAY

SMALL

20370 48 × 48 × 4 CM
19" × 19" × 1,6"

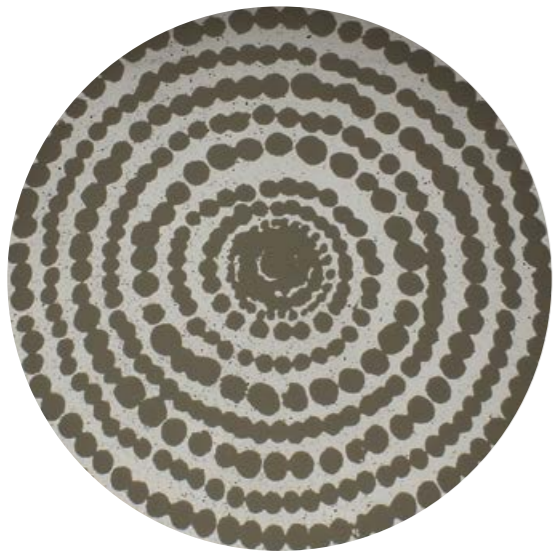
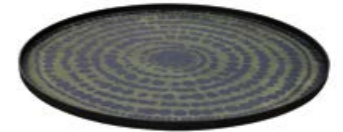


MIDNIGHT BEADS

DRIFTWOOD TRAY

XL

20449 92 × 92 × 4 CM
36" × 36" × 1,6"



GOLD BEADS

MIST AGED MIRROR TRAY

LARGE

20373 61 × 61 × 4 CM
24" × 24" × 1,6"



GOLD MULTI BEADS

MIST AGED MIRROR TRAY

LARGE

20376 61 × 46 × 5 CM
24" × 18" × 2"





BEADED DETAIL
MIST AGED MIRROR TRAY

SMALL
20375 46 × 36 × 4 CM
18" × 14" × 1,6"



BIRDS OF PARADISE
GLASS TRAY

LARGE
20345 61 × 61 × 4 CM
24" × 24" × 1,6"



OCEAN BLUE COLLECTION

UMBRELLAS
GLASS TRAY

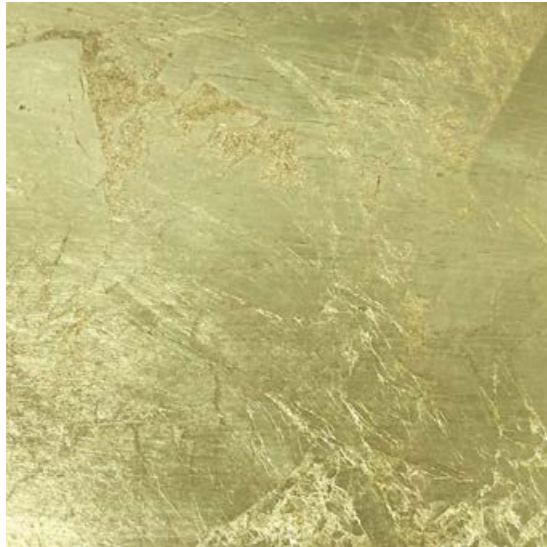
SMALL
20340 48 × 48 × 4 CM
19" × 19" × 1,6"



TRIBAL HEXAGON
GLASS TRAY

SMALL
20341 48 × 48 × 4 CM
19" × 19" × 1,6"





VALET TRAYS

GOLD LEAF

GLASS TRAY - METAL RIM

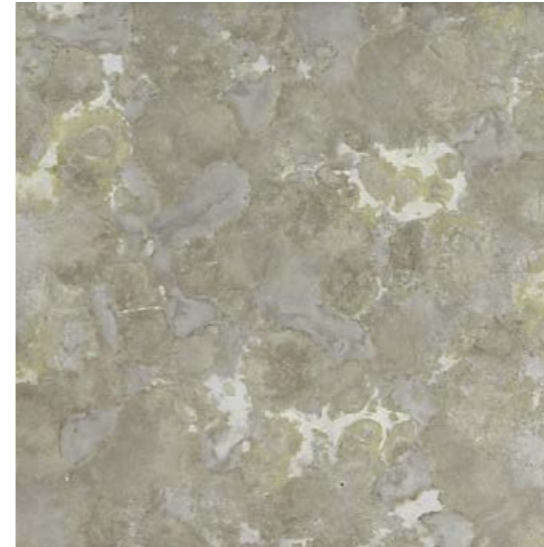
20386 16 × 16 × 3 CM
6" × 6" × 1"



20387 31 × 17 × 3 CM
12" × 7" × 1"



20388 46 × 18 × 3 CM
18" × 7" × 1"



FOSSIL ORGANIC

GLASS TRAY - METAL RIM

20383 16 × 16 × 3 CM
6" × 6" × 1"



20384 31 × 17 × 3 CM
12" × 7" × 1"



20385 46 × 18 × 3 CM
18" × 7" × 1"



CHARCOAL

HEAVY AGED MIRROR TRAY - METAL RIM

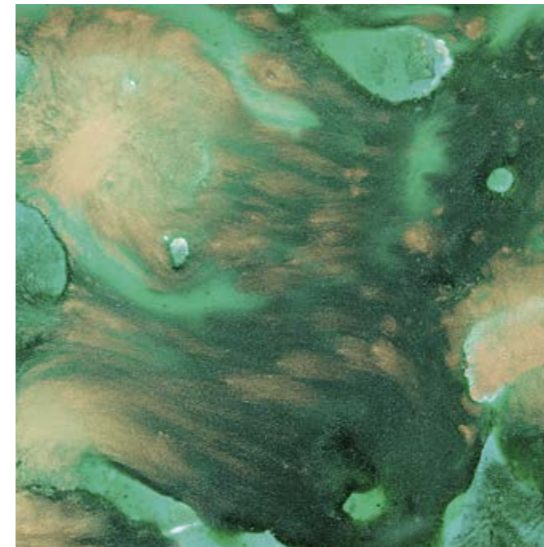
20523 16 × 16 × 3 CM
6" × 6" × 1"



20524 31 × 17 × 3 CM
12" × 7" × 1"



20525 46 × 18 × 3 CM
18" × 7" × 1"



MALACHITE ORGANIC

GLASS TRAY - METAL RIM

20380 16 × 16 × 3 CM
6" × 6" × 1"

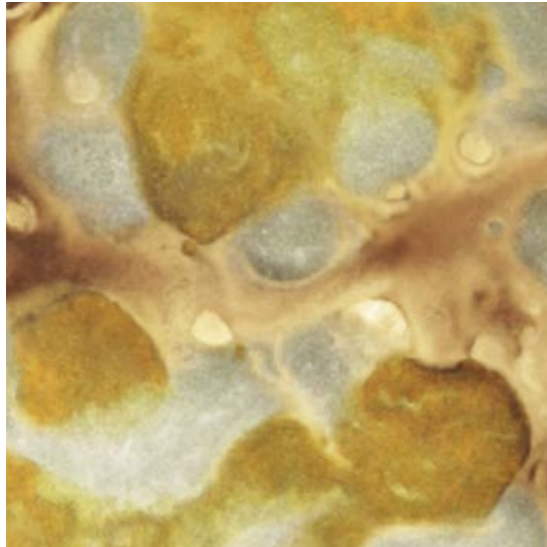


20381 31 × 17 × 3 CM
12" × 7" × 1"



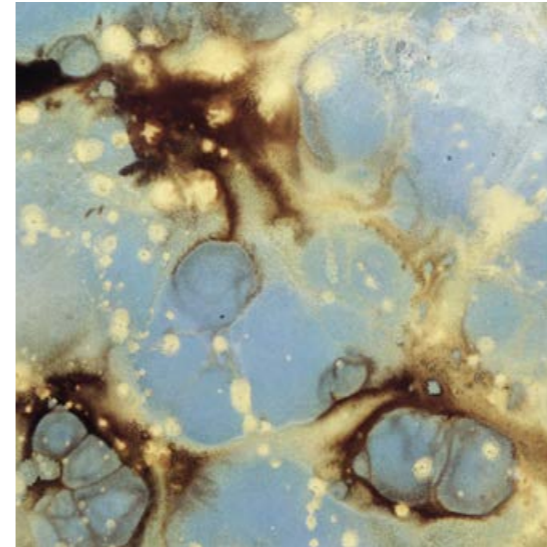
20382 46 × 18 × 3 CM
18" × 7" × 1"





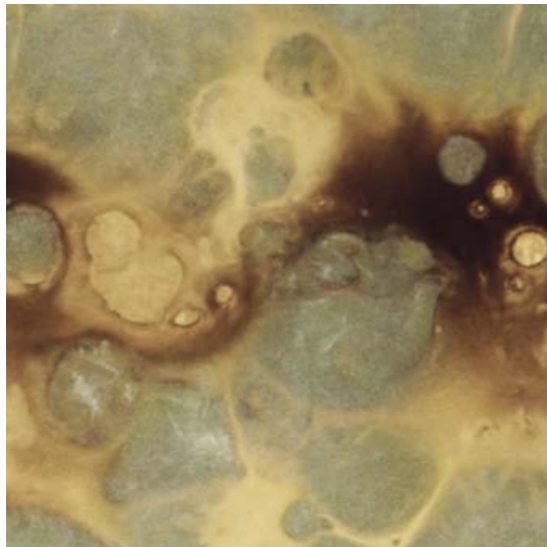
YELLOW ORGANIC
GLASS TRAY - METAL RIM

20538 19 × 16 × 3 CM
7" × 6" × 1"



TEAL ORGANIC
GLASS TRAY - METAL RIM

20540 29 × 26 × 3 CM
11" × 10" × 1"



MOSS ORGANIC
GLASS TRAY - METAL RIM

20539 23 × 20 × 3 CM
9" × 8" × 1"



GEO STUDY
DRIFTWOOD TRAY - WOODEN RIM

20930 23 × 23 × 3 CM
9" × 9" × 1"





GRAPHITE CHEVRON
DRIFTWOOD TRAY - WOODEN RIM

20931 30 × 30 × 3 CM
12" × 12" × 1"



GOLD LINEAR CIRCLES
GLASS TRAY - WOODEN RIM

20527 23 × 23 × 3 CM
9" × 9" × 1"



MIDNIGHT LINEAR CIRCLES
GLASS TRAY - WOODEN RIM

20526 20 × 20 × 3 CM
8" × 8" × 1"



MIDNIGHT RASPBERRY ORGANIC
GLASS TRAY - WOODEN RIM

20528 30 × 30 × 3 CM
12" × 12" × 1"

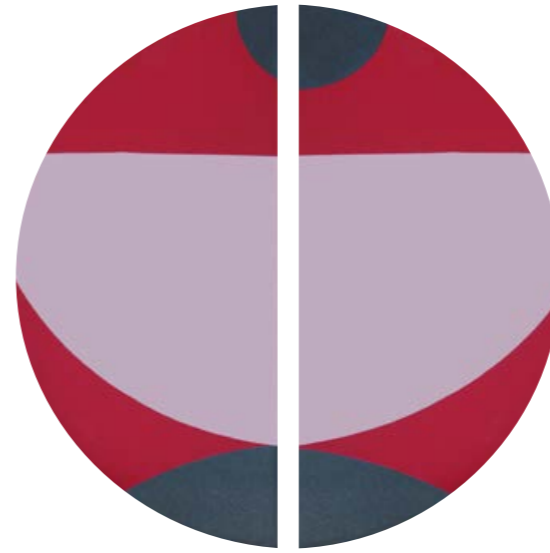
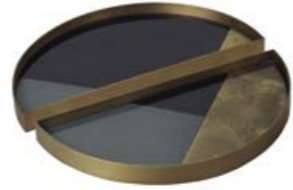




GEOMETRIC HALF-MOON

GLASS TRAY - METAL RIM

20541 15 × 30 × 3 CM
6" × 12" × 1"



BLUSH CURVE

GLASS TRAY - METAL RIM

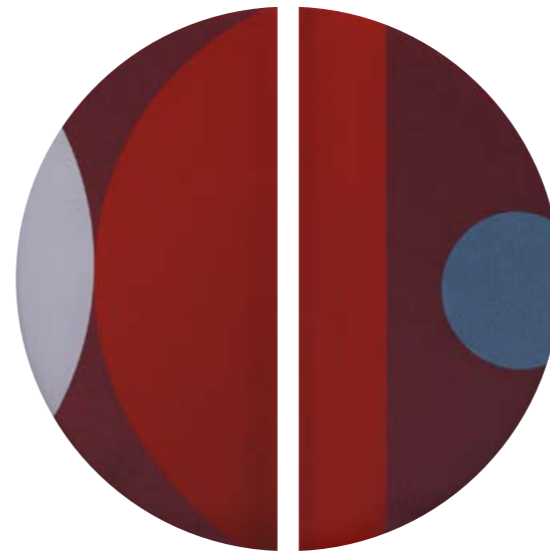
20941 15 × 30 × 3 CM
6" × 12" × 1"



CHEVRON HALF-MOON

GLASS TRAY - METAL RIM

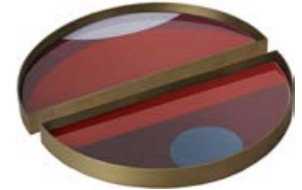
20542 15 × 30 × 3 CM
6" × 12" × 1"



GARNET CURVE

GLASS TRAY - METAL RIM

20942 15 × 30 × 3 CM
6" × 12" × 1"



Perfect Combination

Create a table that is uniquely yours by choosing one of our favorite tray combinations or by selecting your own matching pair of trays.

SMALL & LARGE TRAYS



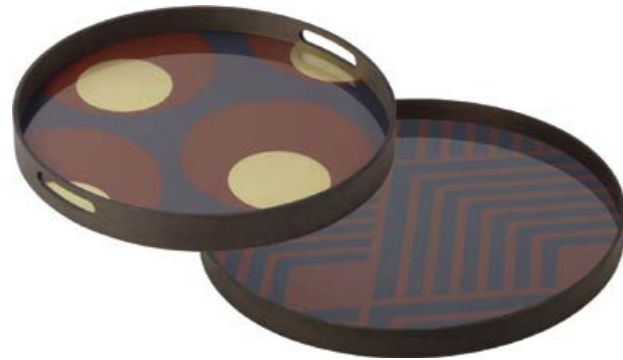
20932 GRAPHITE CHEVRON
20936 FOLK



20437 PINOT LAYERED DOTS
20439 OVERLAPPING DOTS



20438 CONNECTED DOTS
20440 SLATE LAYERED DOTS



20933 TURKISH DOTS
20934 MIDNIGHT CHEVRON



20933 TURKISH DOTS
20935 ORANGE CHEVRON



20305 WHITE SLICE
20303 WHITE TREE



20360 INDIGO ORGANIC
20404 BLACK TREE



20458 GRAPHITE BOHEMIAN
20460 DARK BOHEMIAN



20459 SAND WABI SABI
20461 SLATE WABI SABI



20402 SLICE
20407 BRONZE SLICE



20450 HEAVY AGED CHARCOAL MIRROR
20436 BLACK MARRAKESH



20370 BLACK BEADS
20436 BLACK MARRAKESH



20361 MIST GOLD ORGANIC
20373 GOLD BEADS



20340 UMBRELLAS
20345 BIRDS OF PARADISE



20341 TRIBAL HEXAGON
20345 BIRDS OF PARADISE



20335 BLOSSOM
20336 WHITE MARRAKESH



20301 HEAVY AGED MIRROR
20310 MOROCCAN FROST



20451 RASPBERRY ABSTRACT
20453 RASPBERRY LANDSCAPE



20452 TURQUOISE ABSTRACT
20453 RASPBERRY LANDSCAPE



20403 HEAVY AGED BRONZE MIRROR
20315 HEAVY AGED MIRROR



20371 BLUE MIST ORGANIC
20374 SEASIDE BEADS



20417 GOLD DOTS
20421 DAHLIA



20418 BROWN DOTS
20407 BRONZE SLICE

LARGE & XL TRAYS



20936 FOLK
20937 ASYMMETRIC DOT



20461 SLATE WABI SABI
20462 GRAPHITE WABI SABI



20303 WHITE TREE
20378 WHITE SLICE



20315 HEAVY AGED MIRROR
20331 HEAVY AGED BRONZE MIRROR



20404 BLACK TREE
20379 BLACK SLICE

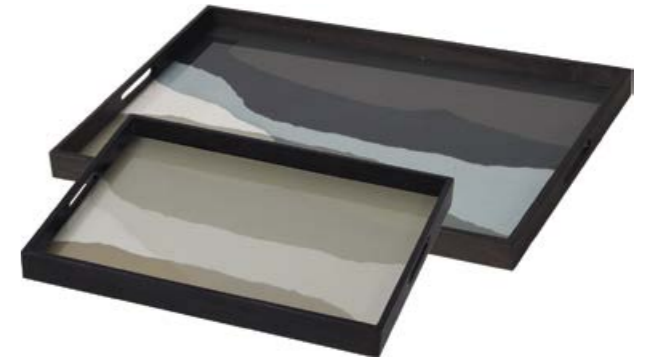


20374 SEASIDE BEADS
20449 MIDNIGHT BEADS

SMALL & LARGE TRAYS



20938 GEO STUDY
20940 SLATE CURVES



20463 SAND WABI SABI
20464 GRAPHITE WABI SABI



20316 HEAVY AGED BRONZE MIRROR
20317 HEAVY AGED BRONZE MIRROR



20422 DOTTED LINE
20424 GOLD AND BLUE HALOS



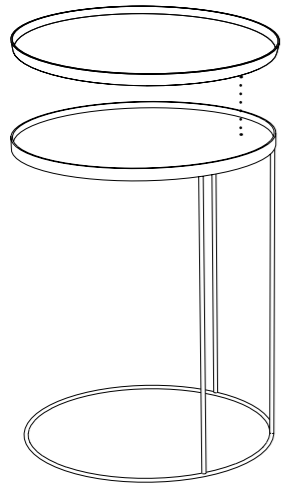
20375 BEADED DETAIL
20376 GOLD MULTI BEADS



20441 SILVER DOTS
20443 SIENNA LAYERED DOTS

ROUND

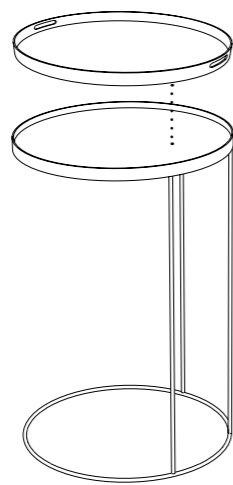
LARGE TRAY



TRAY SIDE TABLE

20339 62 × 62 × 66 CM
24" × 24" × 26"

SMALL TRAY

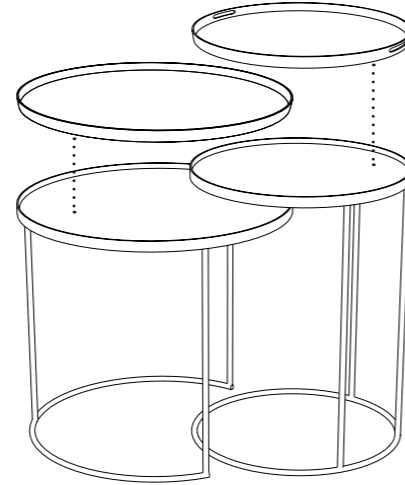


TRAY SIDE TABLE

20704 49 × 49 × 66 CM
19" × 19" × 26"

LARGE TRAY

SMALL TRAY

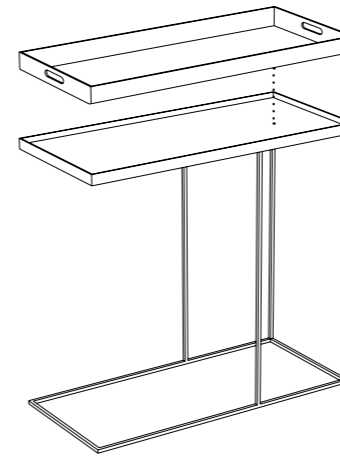


TRAY SIDE TABLE SET

20721 49 × 49 × 66 CM - 62 × 62 × 57 CM
19" × 19" × 26" - 24" × 24" × 22"

RECTANGLE

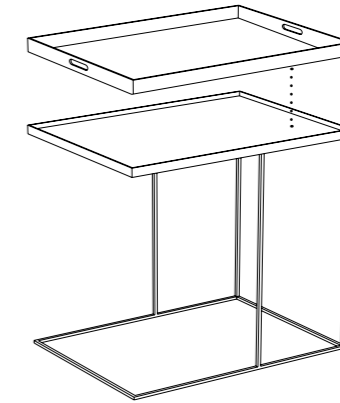
MEDIUM TRAY



TRAY SIDE TABLE

20706 70 × 32 × 64 CM
28" × 13" × 25"

LARGE TRAY

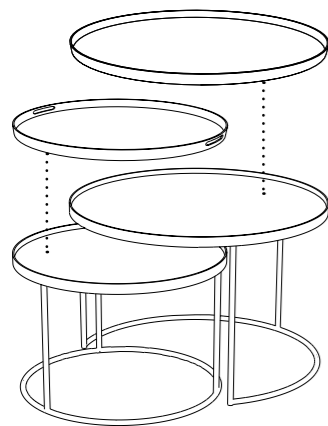


TRAY SIDE TABLE

20720 62 × 47 × 64 CM
24" × 19" × 25"

SMALL TRAY

LARGE TRAY

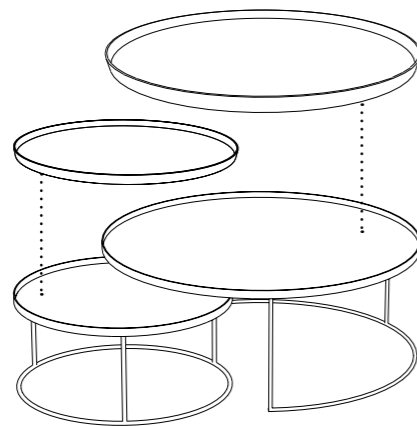


TRAY COFFEE TABLE SET

20726 49 × 49 × 31 CM - 62 × 62 × 38 CM
19" × 19" × 12" - 24" × 24" × 15"

LARGE TRAY

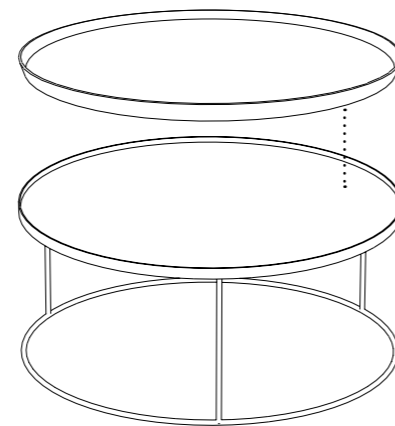
XL TRAY



TRAY COFFEE TABLE SET

20329 62 × 62 × 31 CM - 93 × 93 × 38 CM
24" × 24" × 12" - 37" × 37" × 15"

XL TRAY

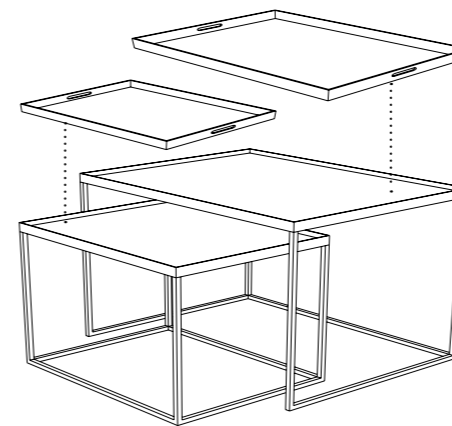


TRAY COFFEE TABLE SET

20328 93 × 93 × 38 CM
37" × 37" × 15"

SMALL TRAY




LARGE TRAY




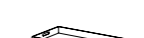

TRAY COFFEE TABLE SET

20725 47 × 37 × 31 CM - 62 × 47 × 38 CM
19" × 15" × 12" - 24" × 19" × 15"

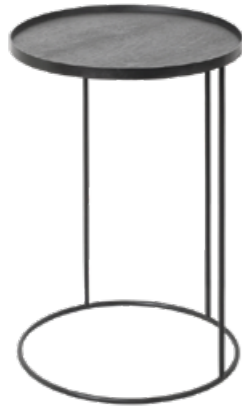
ROUND TRAYS

	small tray	48 × 38 × 4 CM 19" × 19" × 1,6"
	large tray	61 × 61 × 4 CM 24" × 24" × 1,6"
	xl tray	92 × 92 × 4 CM 36" × 36" × 1,6"

RECTANGLE TRAYS

	small tray	46 × 36 × 4 CM 18" × 14" × 1,6"
	medium tray	69 × 31 × 5 CM 27" × 12" × 2"
	large tray	61 × 46 × 5 CM 24" × 18" × 2"

Tray Tables



TRAY SIDE TABLES

*trays to be ordered separately

ROUND TRAY TABLE

BLACK METAL FRAME

20704	49 × 49 × 66 CM
	19" × 19" × 26"
20339	62 × 62 × 66 CM
	24" × 24" × 16"

ROUND TRAY TABLE SET

BLACK METAL FRAME

20721	49 × 49 × 66 CM - 62 × 62 × 57 CM
	19" × 19" × 26" - 24" × 24" × 22"



RECTANGLE TRAY TABLE

BLACK METAL FRAME

20706	70 × 32 × 64 CM
	28" × 13" × 25"
20720	62 × 47 × 64 CM
	24" × 19" × 25"



TRAY COFFEE TABLES

*trays to be ordered separately

ROUND TRAY TABLE

BLACK METAL FRAME

20328 93 × 93 × 38 CM
37" × 37" × 15"



ROUND TRAY TABLE SET

BLACK METAL FRAME

20726 49 × 49 × 31 CM - 62 × 62 × 38 CM
19" × 19" × 12" - 24" × 24" × 15"
20329 62 × 62 × 31 CM - 93 × 93 × 38 CM
24" × 24" × 12" - 37" × 37" × 15"



RECTANGLE TRAY TABLE SET

BLACK METAL FRAME

20725 47 × 37 × 31 CM - 62 × 47 × 38 CM
19" × 15" × 12" - 24" × 19" × 15"

Side Tables



GEOMETRIC SIDE TABLE

OAK ● 100%
 50537 51 × 51 × 50 CM
 20" × 20" × 20"



OAK BLACK ● 100%
 50536 51 × 51 × 50 CM
 20" × 20" × 20"



TEAK BROWN ● 100% NEW
 10196 51 × 51 × 50 CM
 20" × 20" × 20"



COVE SIDE TABLE

TEAK BLACK ● 100% NEW
 10190 50 × 50 × 50 CM
 20" × 20" × 20"



FIN SIDE TABLE

TEAK BLACK ● 100% NEW
 10193 50 × 50 × 50 CM
 20" × 20" × 20"



ARC SIDE TABLE

BLACK METAL LEGS

TEAK BLACK ● 100% NEW
 10199 50 × 50 × 47 CM
 20" × 20" × 19"



BAU SIDE TABLE

BLACK METAL LEGS

TEAK BLACK ● 100% NEW

10200 53 × 53 × 47 CM
20" × 20" × 19"



OBLIC SIDE TABLE

TEAK BLACK ● 100% NEW

10185 52 × 52 × 49 CM
20" × 20" × 19"



COMPACT SIDE TABLE

BLACK METAL FRAME, MIRROR TOP

CHARCOAL ●

20760 30 × 30 × 60 CM
12" × 12" × 24"

20762 40 × 40 × 60 CM
16" × 16" × 24"

20764 40 × 40 × 90 CM
16" × 16" × 35"



TABWA SIDE TABLE

BLACK METAL LEGS

TEAK DARK ● 100%

12217 58 × 58 × 62 CM
23" × 23" × 24"

12218 65 × 65 × 52 CM
26" × 26" × 20"

12219 83 × 83 × 44 CM
33" × 33" × 17"



N701 SIDE TABLE

BLACK METAL FRAME

OAK ● 100% NEW

50121 40 × 40 × 53 CM
16" × 16" × 21"



TEAK ● FSC® 100%

10125 40 × 40 × 53 CM
16" × 16" × 21"



TRIPOD SIDE TABLE

- OAK ● (V) 100%
- 50508 46 × 46 × 56 CM
18" × 18" × 22"
- 50509 70 × 70 × 60 CM
28" × 28" × 24"



- OAK BLACK ● (V) 100%
- 50527 46 × 46 × 56 CM
18" × 18" × 22"
- 50528 70 × 70 × 60 CM
28" × 28" × 24"



- TEAK ● FSC® 100%
- 14212 46 × 46 × 56 CM
18" × 18" × 22"



- WALNUT ● (V) 100%
- 44212 46 × 46 × 56 CM
18" × 18" × 22"



MIKADO SIDE TABLE

- OAK ● (V) 100%
- 50541 50 × 50 × 50 CM
20" × 20" × 20"



BOK SIDE TABLE

- OAK ● (V) 100%
- 51501 43 × 43 × 50 CM
17" × 17" × 20"

- OAK BLACK ● (V) 100%
- 51510 43 × 43 × 50 CM
17" × 17" × 20"



TWIST SIDE TABLE

- OAK ● (V) 100%
- 50556 41 × 41 × 41 CM
16" × 16" × 16"
- 50557 46 × 46 × 46 CM
18" × 18" × 18"
- 50558 51 × 51 × 51 CM
20" × 20" × 20"



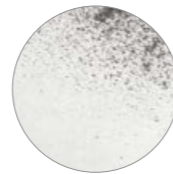
NESTING SIDE TABLES

NESTING SIDE TABLE SET OF 2
HEAVY AGED MIRROR TOP, BLACK METAL FRAME

BRONZE COPPER ●
20702 43 × 43 × 56 CM - 17" × 17" × 22"
56 × 56 × 69 CM - 22" × 22" × 27"



CLEAR ●
20723 43 × 43 × 56 CM - 17" × 17" × 22"
56 × 56 × 69 CM - 22" × 22" × 27"



CHARCOAL ●
20703 43 × 43 × 56 CM - 17" × 17" × 22"
56 × 56 × 69 CM - 22" × 22" × 27"



HEXAGON SIDE TABLE SET OF 2
COBALT MIST ORGANIC GLASS TOP, BLACK METAL FRAME

20727 54 × 46 × 48 CM - 21" × 18" × 19"
66 × 57 × 54 CM - 26" × 22" × 21"



MONOLIT SIDE TABLE S
METAL FRAME, REMOVABLE COVER

OAK ● 100%
BLACK METAL
26865 48 × 48 × 51 CM
19" × 19" × 20"

OAK ● 100%
WHITE METAL
26858 48 × 48 × 51 CM
19" × 19" × 20"

RISE SIDE TABLE
BLACK METAL LEGS

OAK ● 100%
50134 50 × 30 × 55 CM
20" × 12" × 22"

WIRELESS CHARGING
EU 50140 - UK 50157 - US 50156

Wall Decor



AGED MIRRORS

RECTANGLE MIRROR

METAL FRAME

BRONZE HEAVY AGED ●

FLOOR

20661 71 × 3 × 244 CM
28" × 1" × 96"

WALL

20660 122 × 3 × 153 CM
48" × 1" × 60"



RECTANGLE MIRROR

METAL FRAME

CLEAR MEDIUM AGED ●

FLOOR

20663 71 × 3 × 244 CM
28" × 1" × 96"

WALL

20662 122 × 3 × 153 CM
48" × 1" × 60"



FRAMELESS MIRROR NEW
BRASS PLATED CLIPS

BRONZE MEDIUM AGED ●

FLOOR

20671 62 × 3 × 194 CM
24" × 1" × 76"

WALL

20670 62 × 3 × 62 CM
24" × 1" × 24"



FRAMELESS MIRROR NEW
BRASS PLATED CLIPS

CLEAR MEDIUM AGED ●

FLOOR

20673 62 × 3 × 194 CM
24" × 1" × 76"

WALL

20672 62 × 3 × 62 CM
24" × 1" × 24"





ROUND MIRROR

WOODEN FRAME

BRONZE HEAVY AGED ●

- 20602 48 × 3 × 48 CM
19" × 1" × 19"
- 20603 61 × 3 × 61 CM
24" × 1" × 24"
- 20605 92 × 3 × 92 CM
36" × 1" × 36"



CLEAR MEDIUM AGED ●

- 20600 48 × 3 × 48 CM
19" × 1" × 19"
- 20601 61 × 3 × 61 CM
24" × 1" × 24"
- 20604 92 × 3 × 92 CM
36" × 1" × 36"

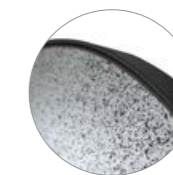


GATE MIRROR **NEW**

METAL FRAME

CLEAR MEDIUM AGED ●

- FLOOR**
- 20607 80 × 3 × 200 CM
31" × 1" × 79"





PLAIN MIRRORS

LIGHT FRAME MIRROR

OAK ● ① 100%

51299 90 × 5 × 200 CM
35" × 2" × 79"



GOLD LEAF BRONZE MIRROR

WOODEN FRAME

WALL

20606 88 × 4 × 88 CM
35" × 2" × 35"



LAYERS ROUND MIRROR

OAK ● ②

58164 91 × 4 × 91 CM
36" × 2" × 36"

58165 121 × 4 × 121 CM
48" × 2" × 48"



SHELVES

UTILITILE HOOKED

OAK ● 100%
 55097 40 × 4 × 40 CM
 16" × 2" × 16"

TEAK ● 100%
 15097 40 × 4 × 40 CM
 16" × 2" × 16"

RIBBON SHELF

OAK ● 100%
 BLACK METAL
 26623 70 × 20 × 17 CM
 28" × 8" × 7"

OAK ● 100%
 WHITE METAL
 26616 70 × 20 × 17 CM
 28" × 8" × 7"



WALL SHELF

OAK ● 100%
 51358 70 × 22 × 5 CM
 28" × 9" × 2"
 51359 140 × 22 × 5 CM
 55" × 9" × 2"
 51360 210 × 22 × 5 CM
 83" × 9" × 2"

U SHELF

OAK ● 100%
 BLACK METAL
 26193 40 × 30 × 30 CM
 16" × 12" × 12"
 26202 55 × 20 × 20 CM
 22" × 8" × 8"
 26211 70 × 15 × 15 CM
 28" × 6" × 6"

OAK ● 100%
 WHITE METAL
 26186 40 × 30 × 30 CM
 16" × 12" × 12"
 26194 55 × 20 × 20 CM
 22" × 8" × 8"
 26204 70 × 15 × 15 CM
 28" × 6" × 6"

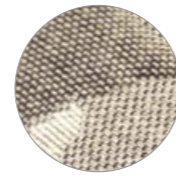


REFINED LAYERS COLLECTION

CONNECTED DOTS

80% COTTON - 14% POLYACRYL -
3% VISCOSE - 3% POLYESTER

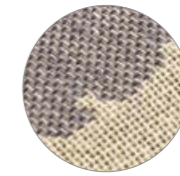
21025 50 × 50 CM
20" × 20"



LAYERED DOTS

80% COTTON - 14% POLYACRYL -
3% VISCOSE - 3% POLYESTER

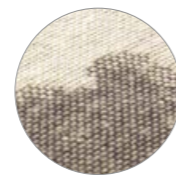
21026 50 × 50 CM
20" × 20"



ABSTRACT DETAIL

80% COTTON - 14% POLYACRYL -
3% VISCOSE - 3% POLYESTER

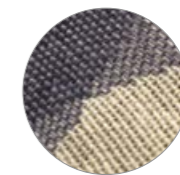
21028 60 × 40 CM
24" × 16"



CONNECTED DOTS

80% COTTON - 14% POLYACRYL -
3% VISCOSE - 3% POLYESTER

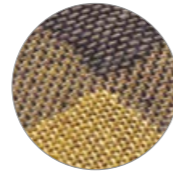
21029 60 × 40 CM
24" × 16"





OVERLAPPING DOTS
80% COTTON - 14% POLYACRYL -
3% VISCOSE - 3% POLYESTER

21027 50 x 50 CM
20" x 20"

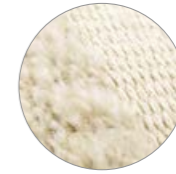


Our cushion covers come with a 100% duck feather insert, carefully selected to obtain the best comfort and look.



URBAN
45% POLYACRYL - 19% WOOL - 17% POLYESTER -
17% COTTON - 1% ALPACA - 1% POLYAMIDE

21034 50 x 50 CM
20" x 20"



URBAN
45% POLYACRYL - 19% WOOL -
17% POLYESTER - 17% COTTON -
1% ALPACA - 1% POLYAMIDE

21035 60 x 40 CM
24" x 16"

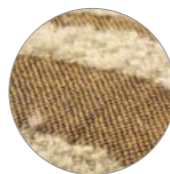




AVANA ORB

38% POLYACRYL - 33% COTTON - 15% WOOL -
13% POLYESTER - 1% VISCOSE

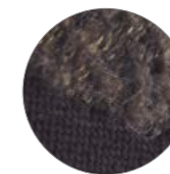
21030 45 × 45 CM
18" × 18"



MORO ORB

38% POLYACRYL - 33% COTTON - 15% WOOL -
13% POLYESTER - 1% VISCOSE

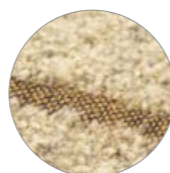
21031 45 × 45 CM
18" × 18"



AVANA ABSTRACT

38% POLYACRYL - 33% COTTON - 15% WOOL -
13% POLYESTER - 1% VISCOSE

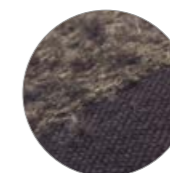
21032 60 × 40 CM
24" × 16"



MORO ABSTRACT

38% POLYACRYL - 33% COTTON - 15% WOOL -
13% POLYESTER - 1% VISCOSE

21033 60 × 40 CM
24" × 16"





AVANA CHEVRON
51% POLYACRYL - 21% WOOL -
18% POLYESTER - 10% COTTON

21036 50 x 50 CM
20" x 20"



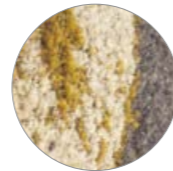
NERO CHEVRON
51% POLYACRYL - 21% WOOL -
18% POLYESTER - 10% COTTON

21037 50 x 50 CM
20" x 20"



AVANA CHEVRON
51% POLYACRYL - 21% WOOL -
18% POLYESTER - 10% COTTON

21038 60 x 40 CM
24" x 16"



NERO CHEVRON
51% POLYACRYL - 21% WOOL -
18% POLYESTER - 10% COTTON

21039 60 x 40 CM
24" x 16"





OAT NOMAD
52% COTTON - 32% LINEN -
11% VISCOSE - 5% POLYAMIDE

21052 60 × 40 CM
24" × 16"



BLUE NOMAD
52% COTTON - 32% LINEN -
11% VISCOSE - 5% POLYAMIDE

21045 60 × 40 CM
24" × 16"



SILVER NOMAD
52% COTTON - 32% LINEN -
11% VISCOSE - 5% POLYAMIDE

21044 60 × 40 CM
24" × 16"



CAMEL NOMAD
52% COTTON - 32% LINEN -
11% VISCOSE - 5% POLYAMIDE

21046 60 × 40 CM
24" × 16"

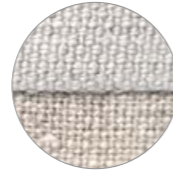




OAT LIN SAUVAGE NEW

100% LINEN

21053 60 × 60 CM
24" × 24"



BLUE LIN SAUVAGE NEW

100% LINEN

21055 60 × 60 CM
24" × 24"



SILVER LIN SAUVAGE NEW

100% LINEN

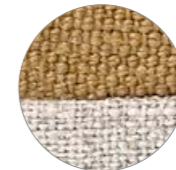
21054 60 × 60 CM
24" × 24"



CAMEL LIN SAUVAGE NEW

100% LINEN

21056 60 × 60 CM
24" × 24"





OAT NOMAD
52% COTTON - 32% LINEN -
11% VISCOSE - 5% POLYAMIDE

21051 140 × 200 CM
55" × 79"



BLUE NOMAD
52% COTTON - 32% LINEN -
11% VISCOSE - 5% POLYAMIDE

21049 140 × 200 CM
55" × 79"



SILVER NOMAD
52% COTTON - 32% LINEN -
11% VISCOSE - 5% POLYAMIDE

21048 140 × 200 CM
55" × 79"



CAMEL NOMAD
52% COTTON - 32% LINEN -
11% VISCOSE - 5% POLYAMIDE

21050 140 × 200 CM
55" × 79"





URBAN THROW

44% POLYACRYL - 22% WOOL - 8% POLYESTER, 16%
COTTON - 5% ALPACA - 5% POLYAMIDE

21047 140 × 195 CM
55" × 77"



HOW TO TAKE CARE OF OUR PRODUCTS

About natural materials

The beauty of natural materials lies in its peculiarities and imperfections. That is what separates true beauty from the artificial. Variations in wood grain and color, knots, medullary rays and other natural characteristics are inherent in solid wood. These are far from flaws, but an intricate part of its character. Natural stone can have minor pitting or surface fissures. We believe that these imperfections contribute to the charm of Ethnicraft products.

Wood, like any other natural and porous material, continues to absorb and release humidity throughout its life. Although Ethnicraft designs furniture that adapts well to the hydrometrical conditions of its environment, some cracking or movement may occur. Please do not be alarmed, this is a normal response to the furniture's environment.

UNIQUENESS OF OUR PRODUCT

The Ethnicraft brand incorporates classic and traditional techniques, such as metal-leafing, hand-painting, silk screen-printing and aging. Due to the handcrafted nature of our products, each item will vary slightly. We consider this a sign of uniqueness and quality.

*Wood is a product of nature.
We believe that their imperfections
contribute to the charm
of our creations.*

Tips & tricks

- All Ethnicraft products are intended for indoor use only.
- Recommended humidity in the room: between 40% and 60%.
- Ideal room temperature: 21°C/70°F during the day, not below 14°C/57°F at night.
- To prevent color differences: Do not place your furniture in direct sunlight, move objects placed on the furniture from time to time and open your extendable table on a regular basis.
- Avoid exposure to extreme conditions: do not place furniture near heating sources or air-conditioned spaces.
- To prevent staining we recommend that any spills are removed immediately.
- When cleaning the surface, always work in the direction of the wood grain.
- Use place mats to prevent hot pots and pans, or cold glasses and bottles, from leaving marks on the furniture.
- Do not drag the furniture along the floor, always lift the furniture when moving.
- Always ensure water and solutions used to clean the floor do not come into contact with the furniture's base, as it might leave permanent marks.
- Last but not least, we recommend to carefully read the care instructions.
- The Ethnicraft trays are intended for decorative and everyday use. They are not to be used in a setting such as, but not limited to, restaurants where they are exposed to constant washing, repetitive handling and service of heavy items.

SPOT CLEANING HOME TEXTILES

- Treat stains immediately.
- Blot up as much of the spill as possible with a clean, dry, white cloth. Don't rub.
- Blot up the stain with a clean, slightly damp white cloth, working from the outer edge to the center of the stain.
- Use a hair dryer on the lowest heat setting to evenly dry the fabric and prevent moisture rings.

Oak furniture

OILED

Most of the Ethnicraft oak furniture is finished with a pigmented hardwax oil. This finish gives the furniture its desired natural color and forms a natural protective coating that acts as a repellent against most common substances and liquids, but is no foolproof guarantee against stains. In case of a spill, remove it immediately.

REGULAR CARE

- For regular dusting, use a dry cloth. For cleaning or in case of a spill, use a damp cloth and natural soap. Wipe in the direction of the grain. Do not use soap containing detergent or other chemicals. Dry with a soft clean cloth to prevent spotting.

REFRESHING THE SURFACE

- To refresh your furniture or to remove superficial stains (crayons or pencil marks, wine or fruit juice stains, etc.) we recommend Osmo Liquid Wax Cleaner (3029). This product cleans and regenerates the elegant character of the wood and slightly reinforces the original protective coating. Osmo Liquid Wax Cleaner is no guarantee against stains.

THOROUGH CARE

- As time goes by, the original hardwax coating may need to be renewed. We recommend using Osmo Hardwax Oil Natural (3041). In case of discoloration, stubborn stains or to remove a superficial scratch, we advise to sand the surface first. Make sure the surface is clean and dry before applying the Hardwax Oil. It is important to spread the product evenly over the surface and remove excess product immediately after application to avoid spots after drying.

VARNISHED

Our black oak furniture, and a selection of our natural oak items, are varnished instead of oiled. You will find varnished items clearly indicated in this catalog. Varnish offers a good protection against stains. Even with this preventative and extensive treatment, spills should be removed immediately.

REGULAR CARE

- For regular dusting, use a dry cloth. For cleaning or in case of a spill, use a damp cloth and natural soap. Wipe in the direction of the grain. Do not use soap containing detergent or other chemicals. Dry with a soft clean cloth to prevent spotting.

HOW TO TAKE CARE OF OUR PRODUCTS

Teak furniture

NATURAL

Our teak range comes without any finish or protective treatment. The wood is merely polished, allowing the natural oils to rise to the surface. The high density of teak wood has the advantage that stains stay on the surface and do not penetrate the wood easily. Even with these characteristics, spills should be removed immediately.

PREVENTIVE TREATMENT

- If you want to protect the wood from the start, apply a protective coating. We recommend Occulto Oil (9911). This seals the pores of the timber and creates a natural protection. Stains and marks should still be removed immediately.

REGULAR CARE

- For regular dusting, use a dry cloth. For cleaning or in case of a spill, use a damp cloth and natural soap. Wipe in the direction of the grain. Do not use soap containing detergent or other chemicals. Dry with a soft clean cloth to prevent spotting.

THOROUGH CARE

- To remove stubborn stains or superficial scratches, extra fine sand paper can be used. Make sure you always rub in the direction of the wood grain.

VARNISHED

- Part of the teak furniture items are varnished. You will find varnished items clearly indicated in this catalog. Varnish offers a good protection against stains. Even with this preventive and extensive treatment, spills should be removed immediately.

REGULAR CARE

- For regular dusting, use a dry cloth. For cleaning or in case of a spill, use a damp cloth and natural soap. Wipe in the direction of the grain. Do not use soap containing detergent or other chemicals. Dry with a soft clean cloth to prevent spotting.

VARNISHED AND WAXED

The carved parts of our Ancestors Tabwa collection are varnished but to achieve its signature shine a wax is applied. Even with this preventive and extensive treatment, spills should be removed immediately.

REGULAR CARE

- For regular dusting, use a dry cloth. For cleaning or in case of a spill, use a damp cloth and natural soap. Do not use soap containing detergent or other chemicals. Dry with a soft clean cloth to prevent spotting.

REFRESHING THE SURFACE

- Dust the surface first. Apply dark brown liquid beeswax using a soft cloth or a furniture brush. Allow the beeswax to dry. Buff with a clean soft cloth and/or furniture brush. Repeat until desired level of shine is reached.

Walnut furniture

OILED

All Ethnicraft walnut furniture is finished with a tinted natural oil. This finish gives the furniture its desired natural color and forms a natural protective coating that acts as a repellent against most common substances and liquids, but is no foolproof guarantee against stains. In case of a spill, remove it immediately.

REGULAR CARE

- For regular dusting, use a dry cloth. For cleaning or in case of a spill, use a damp cloth and natural soap. Wipe in the direction of the grain. Do not use soap containing detergent or other chemicals. Dry with a soft clean cloth to prevent spotting.

REFRESHING THE SURFACE

- To refresh your furniture or to remove superficial stains (crayons or pencil marks, wine or fruit juice stains, etc.) we recommend Osmo Liquid Wax Cleaner (3029). This product cleans, regenerates the elegant character of the wood and slightly reinforces the original protective coating. Osmo Liquid Wax Cleaner is no guarantee against stains.

THOROUGH CARE

- As time goes by, the original hardwax coating may need to be renewed. We recommend using Osmo Hardwax Oil for Walnut (5063). In case of discoloration, stubborn stains or to remove a superficial scratch, we advise to sand the surface first. Make sure the surface is clean and dry before applying the Hardwax Oil. It is important to spread the product evenly over the surface and remove excess product immediately after application to avoid spots after drying.

Metal structures

Dust regularly using a soft dry cloth. For a more thorough cleaning, use mild soap and warm water. Rinse with clean water and wipe dry. Do not use steel wool, sandpaper, mineral acid, bleach, or chlorine cleaners on metal surfaces. Always ensure water and solutions do not come into contact with the furniture's metal base and, as it might leave permanent marks on the floor. Some wood species, such as oak, contain tannin, which causes the wood to react with metal and leave permanent stains.

Trays

WOOD

The Ethnicraft items are varnished with a water-based topcoat to repel common substances and fluids, such as coffee, tea and wine. However, the protective coat is no foolproof guarantee against stains. In case of a spill, remove it immediately. For regular dusting, use a dry cloth. For a more thorough cleaning, use furniture polish with a soft cloth.

GLASS & MIRROR

Wipe the glass or mirror surface with a neutral glass cleaner and soft cloth.

METAL

Dust regularly using a soft dry cloth. For a more thorough cleaning, use mild soap and warm water. Rinse with clean water and wipe dry. Do not use steel wool, sandpaper, mineral acid, bleach, or chlorine cleaners on metal surfaces.

Home textiles

The cushion covers and throws are not allowed to be washed, we recommend dry-cleaning only. Fluff up your cushions regularly, this will allow the down to breathe, ensuring the cushions stay light and feathery. Every few months, on a sunny, clear day, lay your pillows in the shadow outside. Fluff them up several times and turn after about an hour. The heat will dry out any slight moisture. In addition, the fresh air will give your pillows a wonderfully clean smell.



OUR COMMITMENT

Wood has always been the core material in the Ethnicraft range. We are deeply aware of the impact of our industry on the environment and we take environmental issues to heart: the origin of the wood, the energy we use in the production and distribution process, the treatment of the products and waste reduction – we try to be as environmentally friendly as possible.

THE ORIGIN OF OUR CORE MATERIAL

Ethnicraft works closely together with the Indonesian governmental body in charge of managing the teak plantations originally set up by the Dutch about 150 years ago. This government agency applies strict policies with regard to annual replanting and the size and quantity of trees that can be felled each year. Where our oak and walnut is concerned: we source oak from well-managed forests in Europe and use black American walnut for our designs.

NO WASTE

Production waste such as leftover logs, wood and sawdust are re-used for other purposes. The sawdust from logs is either used as fuel for the drying ovens or compressed as a base for pellets. All the leftovers from cutting planks to size are recycled and used as base material or as box joints for panels.

The ultimate noble and renewable material, our wood is sourced from responsibly and carefully managed forests.

FSC® LABEL FOR OUR FURNITURE

Our commitment to the environment is reflected by the FSC® CoC (Chain of Custody) certification of our distribution centers. FSC® is a worldwide independent, non-governmental, non-profit organisation that promotes responsible management of the world's forests. In other words, this organisation guarantees that products carrying the FSC® label come from forests that are managed so that they meet the social, economic and ecological needs of present and future generations. In the case of Ethnicraft NV and Azur, the CoC certificate guarantees that the company is perfectly placed to buy, stock and sell products with a specified FSC® certificate, originating from sustainably managed forests, controlled sources and reclaimed materials, or a mixture of these. Other collections carry the FSC® 100% label, which means that these products are made from wood originating from FSC® certified plantations. These ranges are clearly indicated in the catalogue. Moreover, every effort is being made to increase the number of ranges with an FSC® label.



The mark of responsible forestry



The mark of responsible forestry

CREDITS

LIFESTYLE PHOTOGRAPHY

Nicolas Schimp
Catherine De Saegher
Addison Jones

PRODUCT PHOTOGRAPHY

Diane Hendriks
Thomas Ost

GRAPHICS & STYLING

Els Van Roey
Bas Pattyn
Nancy Reijnders

©2020 Ethnicraft

Ethnicraft

RETAIL

Ethnicraft Belgium

Headquarters
Scheldeweg 5
2850 Boom
T + 32 3 443 01 00
F + 32 3 443 01 01
E info@ethnicraft.com

Ethnicraft France

ZAC Euroflory
189, Rue Gabriel Lippmann CS90009
13131 Berre l'Etang CEDEX
T + 33 442 152 152
F + 33 442 152 153
E azur@ethnicraft.com

Ethnicraft Asia

T + 65 83 99 79 64
E info@ethnicraft-asia.com

Ethnicraft USA

High Point, North Carolina
T + 1 336 821 1385
E info@ethnicraft-usa.com

CONTRACT, HOSPITALITY & PROJECTS

Studio Ethnicraft

T + 32 3 443 01 72
E contract@ethnicraft.com

Studio Ethnicraft USA

High Point, North Carolina
T + 1 917 513 0069
E contract@ethnicraft-usa.com

ONLINE

ethnicraft.com

